



COMPANY PROFILE

CATEGORIES

- Introduction 1
- Partners & Brands 1
- U.S Pipe 2
- HDD Technology 2
- CONTECH PVC Pipes 3
- ConShield Products 4
- DANDY Bag 5

Introduction

We are pleased to inform your good office our intention to join the rooster of legitimate suppliers and contractors in your reputable firm.

May we introduce to you our company, AL GAIR Construction & Trading Co, L.L.C. We are one of the young participants in the dynamic field of construction and sales industry here in KSA.

However, the people behind it have extensive experience in the field of sale and marketing services mainly supply of most requested Pipes & related parts through our partners in USA, in addition to the latest and most advanced Ductile Iron Pipe and Fittings known as TR-Flex and 401 protecto ductile Iron Pipe and fittings supersede and precede the



traditional Ductile iron Pipe and fittings along with it most economical time and cost factor.

For further information please visit our web site at www.globeconstruction.us

Our commitment is to provide the best service in due time and within budget.

In this regard, may we

request you to give us a chance to supply all your needs of Ductile Iron Pipes and Fittings as well as to quote/bid to your various on-going and up-coming projects.

Thank you very much and we are looking forward to have business with your firm soon.



Partners & Brands

Our commitment to support your site, is currently located with wide list of trusted partners who provides us with a full listed products in Sewer & Water applications. This will grantee Quality,

Efficiency and Durability for all works and applications proposed.

As mater of facts there are a lot of researches due to difficulties in such field, These studies introduced

many options and ideas in order to jump over field obstacles.

Because of that we worked hard to get the most expertise and professional Brands at your site.



U.S Ductile Iron Pipe

Today U.S. Pipe and Foundry Company, LLC., a wholly owned subsidiary of Mueller Water Products, Inc., is the largest domestic producer of Ductile Iron pipe in the United States. U.S. Pipe perfected the production of Ductile Iron pipe, which is superior in strength to cast iron, and was the first in the industry to use Ductile Iron exclusively for all its pressure pipe and fittings.

This U.S. Pipe Metric catalog covers DN 100 - 2000mm ISO Pipe and Fittings. U.S. Pipe products have been shipped to Colombia, Ecuador, Egypt, El Salvador, Jamaica, Jordan, Kuwait, Nigeria, Oman, Paraguay, The Philippines, Saudi Arabia, Canada, Mexico, Qatar, The United Arab Emirates and many, many other countries around the world. Both (1)

(1) abroad and in the United States customers and specifiers alike have come to depend upon products and services from the “new ideas” company to keep their work flowing.

Standards

ISO 2531 Ductile iron pipes, fittings, accessories and their joints for water or gas applications

ISO 4179 Ductile iron pipes and fittings for pressure and non-pressure pipelines – Cement mortar lining

ISO 4633 Rubber seals – Joint rings for water supply, drainage and sewerage pipelines – Specification for material

ISO 8179-1 Ductile iron pipes – External zinc-based coating – Part 1: Metallic zinc with finishing layer

ISO 8179-2 Ductile iron pipes – External zinc coating – Part 2: Zinc rich paint with finishing layer

ISO 8180 Ductile iron pipes – Polyethylene sleeving for site application

Trenchless Applications

People across the country are finding out that Ductile Iron pipe can be used for Horizontal Directional Drilling (HDD) and for Pipe Bursting. The same great qualities of ruggedness, durability and dependability that make Ductile Iron pipe the choice for water systems across the nation are the same qualities that make it the right choice for Trenchless Technology.

The proven and reliable TR FLEX® and HP LOK Restrained Joint, ensures quick and easy assembly with the great strength needed for the toughest trenchless jobs. Another benefit to our pipe is that the same standard restrained joint, with a pipe length of 18-ft, can be used for either HDD or pipe bursting, no need for expensive special pipe with long lead times, standard restrained joint pipe is usually in stock. The 18-ft lay lengths not only pull in quickly but also are convenient to use with the cartridge method when working in tight city streets or congested urban areas.™

For trenchless sewer applications requiring a protective pipe lining, PROTECTO 401.

Horizontal Directional Drilling with Ductile Iron Pipe (HDD) Technology

The HDD pipeline installation method is becoming more and more common in our industry. In certain unique situations, a trenchless installation may be the only way for a pipeline to be installed or replaced. (2)

(2) But whether your project is a traditional open trench or trenchless installation, you want to install the best pipe material available – and that’s Ductile Iron pipe from U.S. Pipe and Foundry Company.

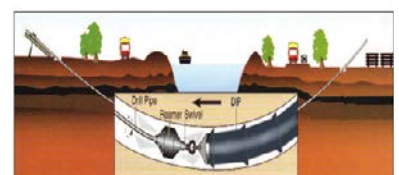
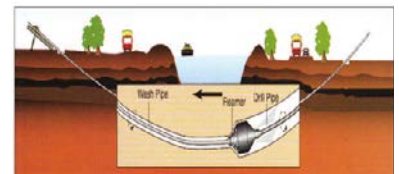
U.S. Pipe’s proven and reliable TR FLEX and HP LOK Restrained Joint is approved for use in applications using Horizontal Directional Drilling. The great strength of Ductile Iron, combined with the renowned TR FLEX and HP LOK Restrained Joint, make it the right choice for HDD. Providing ease of assembly and positive thrust restraint, the TR FLEX and HP LOK Restrained Joint can easily withstand the unique rigors and demands of HDD.

We’ve developed several guidelines to assist you when you decide to use U.S. Pipe’s TR FLEX and HP LOK Restrained Joint in trenchless installations.

ALGHEIR
More than A
Trenchless Partner

We’re on the Web!
www.globeconstruction.us

For more information about this product :
<http://www.uspipe.com/Main/>



Illustrations are courtesy of the Directional Drilling Contractors Association. PULL-BACK.



CONTECH Engineering Solutions represents the leading edge in storm and sanitary sewer pipe technology with an impressive record of field-proven performance. The latest in technology and engineering design has been coupled with time-proven materials and construction practices to increase overall system performance, while offering a more cost-effective solution.

With millions of feet successfully installed, CONTECH PVC Pipe & Fittings superior strength, joint tightness and overall quality have made it a standard in the industry.

More importantly, CONTECH PVC Pipe has proven itself in a variety of applications, including sanitary sewers, storm sewers and sub-drainage systems since 1984.

Selecting Performance Storm Sewers and Drainage Systems

Drainage systems are required to meet multiple criteria. The choice of a particular material depends upon a number of factors; however, the best choice is the one that yields the best performance over the project life cycle.

Thermoplastic Storm Sewer and Drainage Pipe

In recent years, the use of thermoplastic pipe for storm water drainage systems has gained wide acceptance—based upon performance and economic advantages when contrasted with more conventional drainage pipe materials.

However, when it comes to performance, not all thermoplastic storm sewer pipes are equal. There are distinct differences between A-2000 Polyvinyl Chloride (PVC) drainage pipe and other drainage pipes that can affect overall pipe system performance.

CONTECH A-2000 PVC Drainage Pipe:
Available in Diameters 4"-

36" and 14' or 22' lengths.

Originally developed in the early 1980's, A-2000 has built an outstanding performance history that's setting the standard for gravity flow, sanitary sewer applications. The material advantages offered by PVC—plus the innovative,

Strength

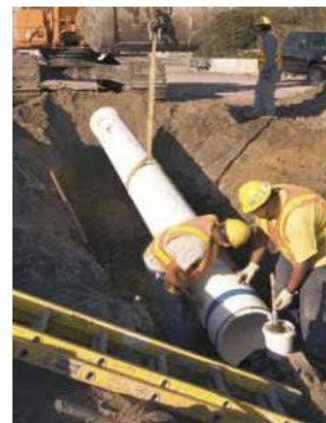
A-2000's PVC compound provides **6 times** greater long-term material stiffness as compared to HDPE drainage pipe materials. And A-2000 pipe, **UNLIKE** HDPE drainage pipe, has a minimum 46 pipe stiffness for **ALL** diameters.

Better deflection control

When compared to other thermoplastic pipes on the market, A-2000 stands up to the test. In fact, it comes out on top.

When installed in accordance with ASTM D2321, A-2000 provides excellent shape control (performance).

The difference between effective pipe stiffness of A-2000 and HDPE drainage pipe during construction on a summer day can result in A-2000 being as much as **3 TIMES STIFFER**.



ALGHEIR
*More than A
Trenchless Partner*

We're on the Web!

www.globeconstruction.us

For more information about this product :
<http://www.conteches.com/products/pipe.asp>



ConShield® Technologies has been helping engineers and sewer departments successfully solve Microbiologically Induced corrosion (MIC) for the past two decades. With Crystal-X™ Water proofing Solutions from ConShield® Technologies, the added protection of water-proofing can now be combined with the superior technology of Con MIC Shield through fully compatible solutions.

Typical Applications

Any concrete mix requiring water proofing (water impermeable) capabilities:

- Tunnels and subway systems
- Foundations
- Precast structures
- Parking structures
- Reservoirs
- Sewage and water treatment plants
- Swimming pools
- Underground vaults

ALGHEIR
More than A
Trenchless Partner

We're on the Web!

www.globeconstruction.us



Liquid Crystalline Water proofing Additive for Concrete

- Creates water impermeable concrete
- Meets NSF/ANSI 61
- Protects reinforcement
- Easy to use
- Liquid, not powder – NO clumping
- Does not require premixing
- A unique liquid water proofing additive for concrete
- Consists of a water based suspension of inorganic water proofing agents
- Can be added to concrete during the batching process or in a ready-mix truck with full mixing capabilities.
- Unlike powder additives, there is no risk of clumping
- Makes concrete denser and enhances many of the concrete's properties. Crystal-X™ AdMix will enhance the concrete freeze/thaw resistance when used in properly designed concrete with air entrainment.

CRYSTAL X AdMix

A liquid concrete additive designed to make new cementitious installations permanently watertight. **Crystal-X™ AdMix** forms millions of fine crystalline fibers inside the capillary pores and micro-cracks while concrete cures and hardens to reduce the pore diameter and block the flow of water through the capillary voids.

CRYSTAL X WP

A dry powder used to create a cementitious slurry for waterproofing the exterior surface of existing concrete and masonry above and below grade.

CRYSTAL X WP SUPER PATCH

A specially engineered fast setting, non-shrink, strong, waterproofing cementitious material, for concrete repair and waterproofing of concrete.

CRYSTAL X WSH

A liquid surface material which deeply penetrates concrete and mortar surfaces to waterproof, densify, harden and dustproof concrete and Portland Cement based material surfaces. **Crystal-X™ WSH** may be used with all of the above **Crystal-X™ Waterproofing Solutions**.

Advantages

- Not a dry powder - easier and safer to mix; homogenous - no fear of clumping.
- May increase concrete strength
- Resists extreme hydrostatic pressure, positive (active) or negative (passive) water pressure side
- Can seal hairline cracks up to 1/64" (0.4 mm)
- Becomes an integral part of the concrete
- Not a vapor barrier - allows concrete to breathe
- Maximum water/cement ratio of concrete should not exceed: 0.55
- Negligible interference with water reducers and plasticizers
- Negligible effect on slump
- Negligible influence on air entrainment
- Non toxic
- Permanent
- Less costly than most other methods



For more information about this product
<http://www.conshield.com/site/>



Sediment Control Solutions, Inlet Protection and Inlet Filters For All Storm Water Systems and Dewatering Projects

One of the greatest environmental concerns we face these days is soil erosion. This is a widespread problem due to the rise of urbanization and a multitude of construction projects that are ongoing. When buildings are constructed, the land is ripped up and dug out, exposing the soil to possible erosion.

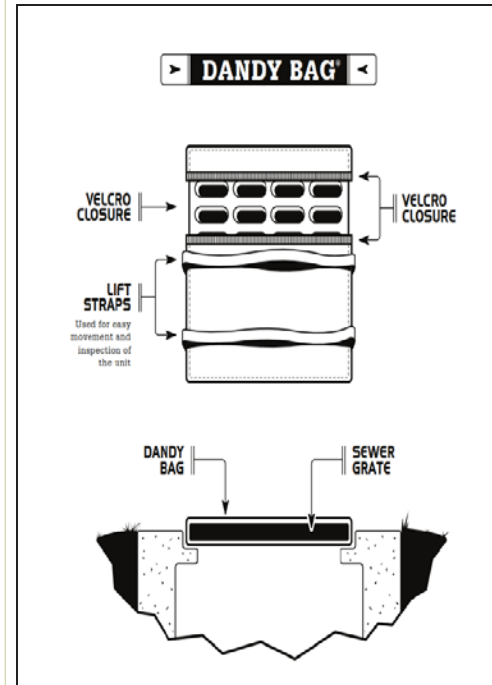
Sediments dug up during construction can find their way to the city's water system through storm sewers, storm grates and storm inlets. This includes large projects and small projects (like the new home being built on your block), alike.

Because of the potential danger to our environment, the government has required contractors to use a professional-grade inlet filter and to erect their own sediment control solutions and measures when starting any new project.

Dandy Products provides eight leading solutions for all of your **sediment control and inlet protection needs**. All Dandy Products put safety first. Sediment is the number one water quality pollutant originating from construction sites. When you try a Dandy Product, we know you'll be able to see the difference right away.



For more information about this product :
<http://www.dandyproducts.com/Home.aspx>



Superior Inlet Protection Filters and Sediment/Erosion Control Products

Each of these products controls the amount of silt, sediment and construction debris to varying degrees and filters them out of storm water systems.

- [Dandy Bag](#) – to be used with flat grates and mountable curbs
- [Dandy Curb](#) – a **curb inlet filter** for **curb and median inlets** without grates
- [Dandy Sack](#) – designed to hang underneath a storm grate
- [Dandy Curb Bag](#) – a **curb inlet filter** for use on **curb and gutter inlets**
- [Dandy Curb Sack](#) - a **curb inlet filter** for use on **curb and gutter inlets**
- [Dandy Pop](#) – a pop up design that is used with field grates



Phone +966 14 8270614
 Fax +966 14 8158156
 E-mail
tariq@globeconstruction.us
Info@globeconstruction.us

We're on the Web!

www.globeconstruction.us